

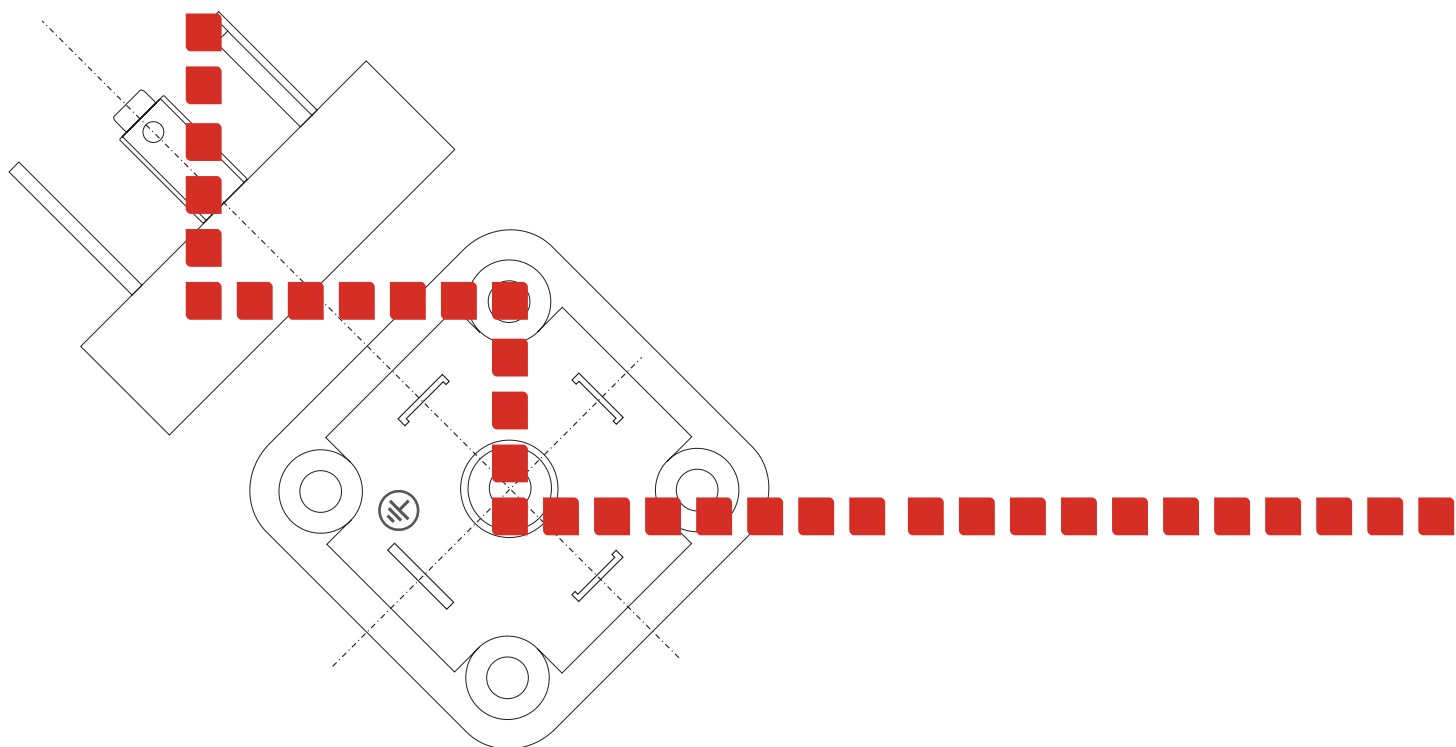


catalogo ■ catalogue ■ katalog

Basette portacontatti

Male plugs

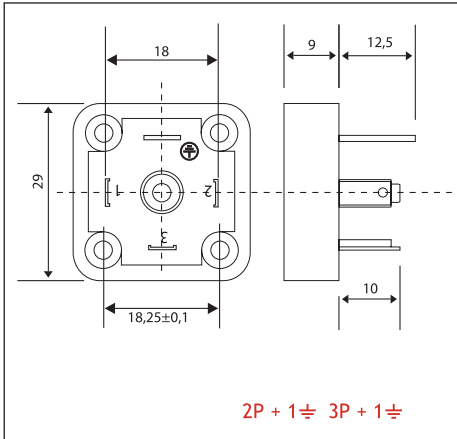
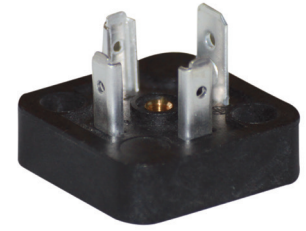
Stiftplatten



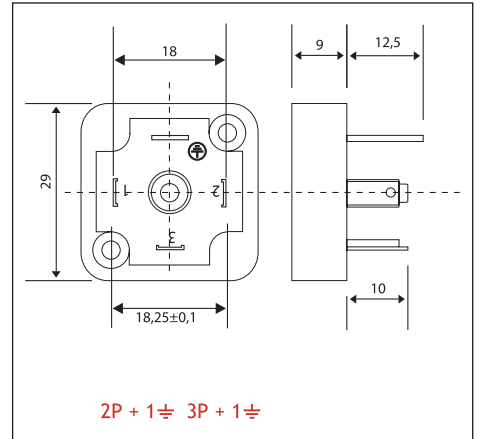


**A02  
A03**

**A02 2F  
A03 2F**



Corpo connettore Connector Stecker	<b>PA 66 + 30% FV</b>
Sezione max conduttori Max cross section Max Leiterquerschnitt	<b>1 mm<sup>2</sup></b>
Tensione nominale (max.) Max voltage Max. Spannung	<b>250 V AC</b>
Portata massima contatti Max. current Max. Strom	<b>16 A</b>
Portata nominale contatti: Operating current: Betriebsstrom:	<b>10 A</b>
Temp. di funzionamento Working temperature Betriebstemperatur	<b>-30 °C / +125 °C</b>



Codici ordine/Codification/Bestellschlüssel

2P + 1 ≡ **A02**

3P + 1 ≡ **A03**

Codici ordine/Codification/Bestellschlüssel

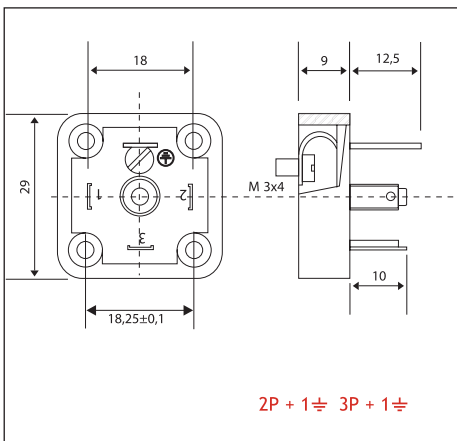
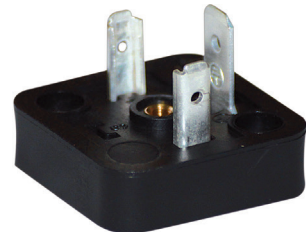
2P + 1 ≡ **A022F**

3P + 1 ≡ **A032F**

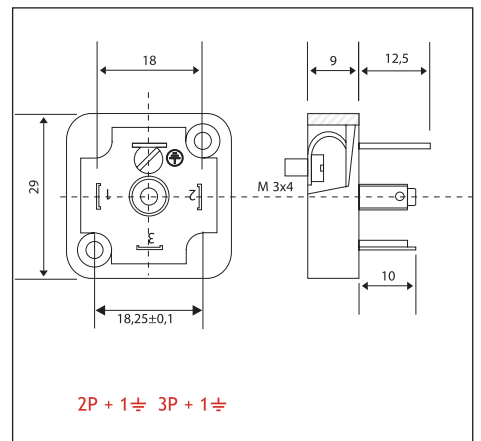


**AV02  
AV03**

**AV02 2F  
AV03 2F**



Corpo connettore Connector Stecker	<b>PA 66 + 30% FV</b>
Sezione max conduttori Max cross section Max Leiterquerschnitt	<b>1 mm<sup>2</sup></b>
Tensione nominale (max.) Max voltage Max. Spannung	<b>250 V AC</b>
Portata massima contatti Max. current Max. Strom	<b>16 A</b>
Portata nominale contatti: Operating current: Betriebsstrom:	<b>10 A</b>
Temp. di funzionamento Working temperature Betriebstemperatur	<b>-30 °C / +125 °C</b>



Codici ordine/Codification/Bestellschlüssel

2P + 1 ≡ **AV02**

3P + 1 ≡ **AV03**

Codici ordine/Codification/Bestellschlüssel

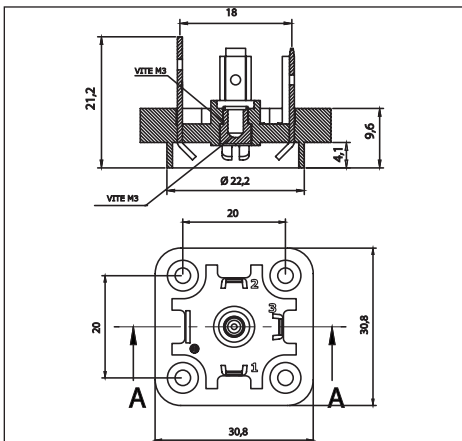
2P + 1 ≡ **AV022F**

3P + 1 ≡ **AV032F**

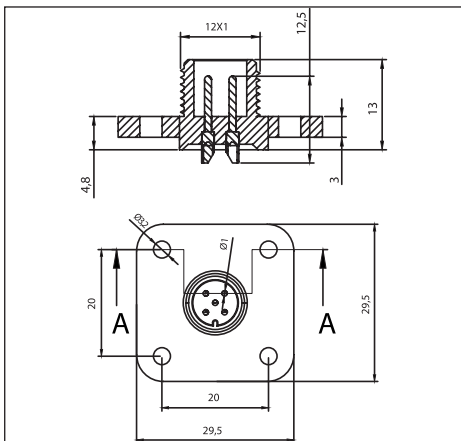


AC

AM12



Corpo connettore Connector Stecker	<b>PA 66 + 30% FV</b>	
Sezione max conduttori Max cross section Max Leiterquerschnitt	AC	<b>1 mm<sup>2</sup></b>
Tensione nominale (max.) Max voltage Max. Spannung	AM12	<b>0,75 mm<sup>2</sup></b>
Portata massima contatti Max. current Max. Strom	AC	<b>16 A</b>
Portata nominale contatti: Operating current: Betriebsstrom:	AM12	<b>4 A</b>
Temp. di funzionamento Working temperature Betriebstemperatur	<b>-30 °C / +125 °C</b>	



Codici ordine/Codification/Bestellschlüssel

2P + 1 ≡ **A02C**

3P + 1 ≡ **A03C**

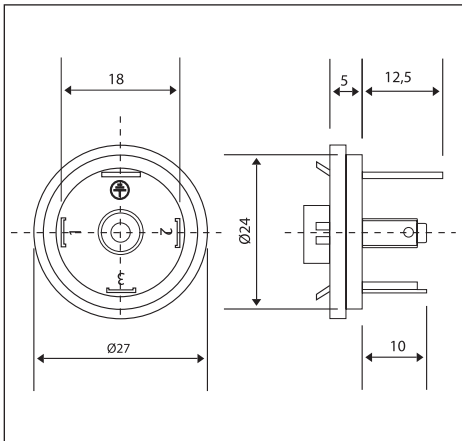
Codici ordine/Codification/Bestellschlüssel

2P + 1 ≡ **AM12M5**

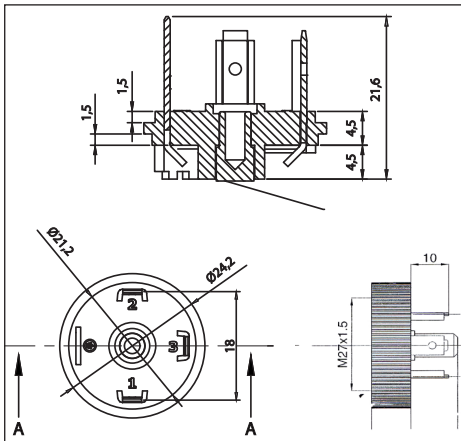


AR02  
AR03

ARB02  
ARB03



Corpo connettore Connector Stecker	<b>PA 66 + 30% FV</b>	
Sezione max conduttori Max cross section Max Leiterquerschnitt		<b>1 mm<sup>2</sup></b>
Tensione nominale (max.) Max voltage Max. Spannung		<b>250 V AC</b>
Portata massima contatti Max. current Max. Strom		<b>16 A</b>
Portata nominale contatti: Operating current: Betriebsstrom:		<b>10 A</b>
Temp. di funzionamento Working temperature Betriebstemperatur	<b>-30 °C / +125 °C</b>	



Codici ordine/Codification/Bestellschlüssel

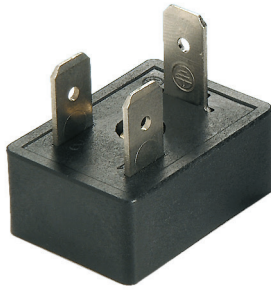
2P + 1 ≡ **AR02**

3P + 1 ≡ **AR03**

Codici ordine/Codification/Bestellschlüssel

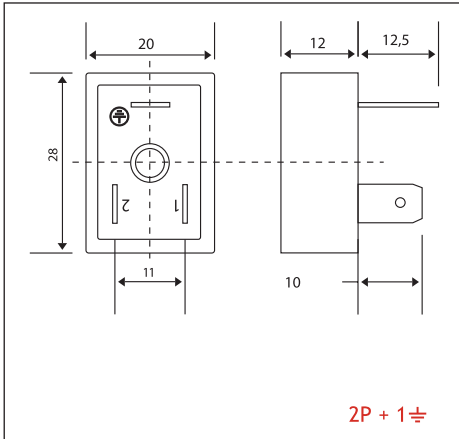
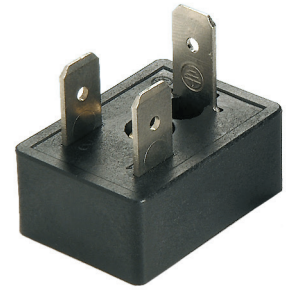
2P + 1 ≡ **ARB02**

3P + 1 ≡ **ARB03**

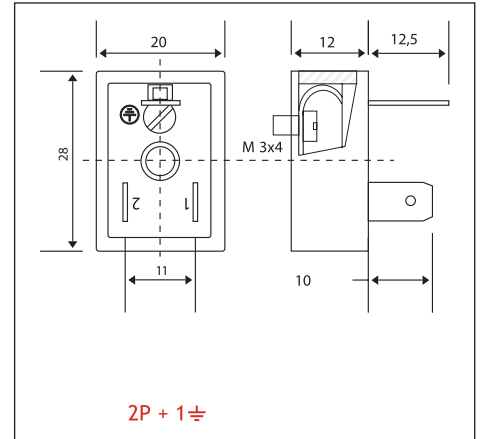


**B02**

**BV02**



Corpo connettore Connector Stecker	<b>PA 66 + 30% FV</b>
Sezione max conduttori Max cross section Max Leiterquerschnitt	<b>1 mm<sup>2</sup></b>
Tensione nominale (max.) Max voltage Max. Spannung	<b>250 V AC</b>
Portata massima contatti Max. current Max. Strom	<b>16 A</b>
Portata nominale contatti: Operating current: Betriebsstrom:	<b>10 A</b>
Temp. di funzionamento Working temperature Betriebstemperatur	<b>-30 °C / +125 °C</b>



Codici ordine/Codification/Bestellschlüssel

**2P + 1**    **B02**

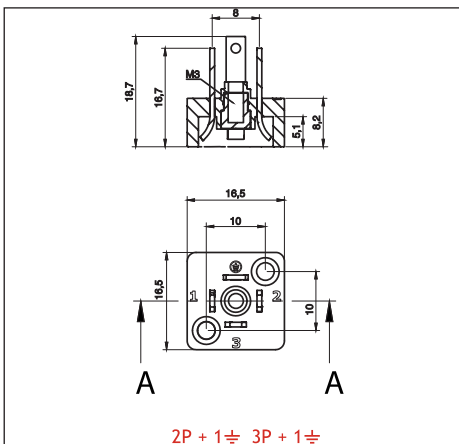
Codici ordine/Codification/Bestellschlüssel

**2P + 1**    **BV02**

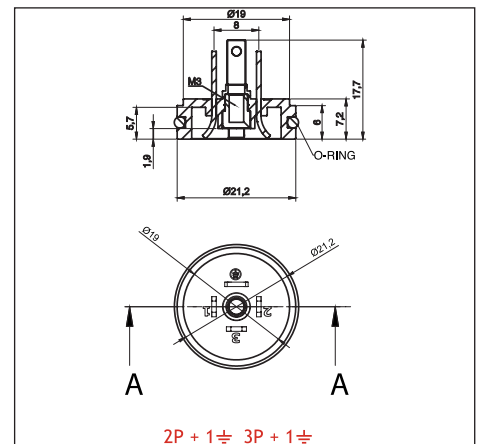


**C06  
C07**

**CR06OR  
CR07OR**



Corpo connettore Connector Stecker	<b>PA 66 + 30% FV</b>
Sezione max conduttori Max cross section Max Leiterquerschnitt	<b>0,75 mm<sup>2</sup></b>
Tensione nominale (max.) Max voltage Max. Spannung	<b>250 V AC</b>
Portata massima contatti Max. current Max. Strom	<b>10 A</b>
Portata nominale contatti: Operating current: Betriebsstrom:	<b>6 A</b>
Temp. di funzionamento Working temperature Betriebstemperatur	<b>-30 °C / +125 °C</b>



Codici ordine/Codification/Bestellschlüssel

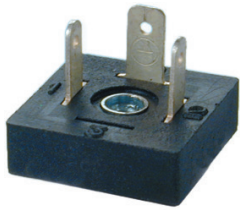
**2P + 1**    **C06**

**3P + 1**    **C07**

Codici ordine/Codification/Bestellschlüssel

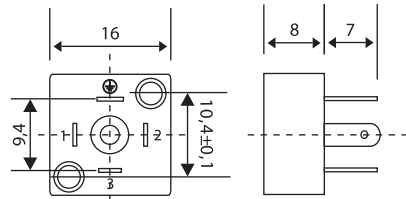
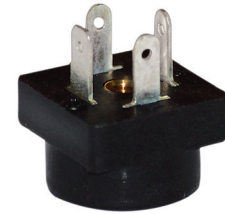
**2P + 1**    **CR06OR**

**3P + 1**    **CR07OR**



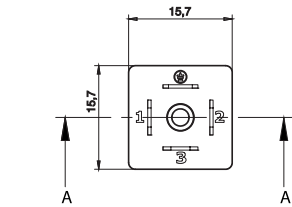
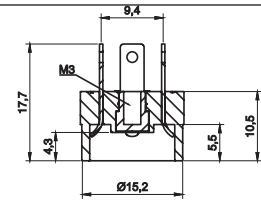
C02  
C03

C02C  
C03C



2P + 1 ≙ 3P + 1 ≙

Corpo connettore Connector Stecker	PA 66 + 30% FV
Sezione max conduttori Max cross section Max Leiterquerschnitt	0,75 mm <sup>2</sup>
Tensione nominale (max.) Max voltage Max. Spannung	250 V AC
Portata massima contatti Max. current Max. Strom	10 A
Portata nominale contatti: Operating current: Betriebsstrom:	6 A
Temp. di funzionamento Working temperature Betriebstemperatur	-30 °C / +125 °C



2P + 1 ≙ 3P + 1 ≙

Codici ordine/Codification/Bestellschlüssel

2P + 1 ≙ C02

3P + 1 ≙ C03

Codici ordine/Codification/Bestellschlüssel

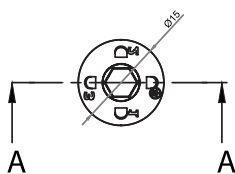
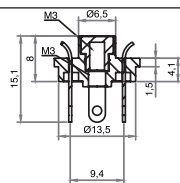
2P + 1 ≙ C02C

3P + 1 ≙ C03C



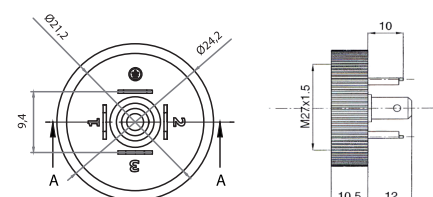
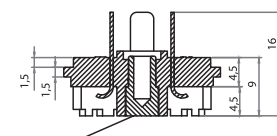
CR02  
CR03

CRB02G  
CRB03G



2P + 1 ≙ 3P + 1 ≙

Corpo connettore Connector Stecker	PA 66 + 30% FV
Sezione max conduttori Max cross section Max Leiterquerschnitt	0,75 mm <sup>2</sup>
Tensione nominale (max.) Max voltage Max. Spannung	250 V AC
Portata massima contatti Max. current Max. Strom	10 A
Portata nominale contatti: Operating current: Betriebsstrom:	6 A
Temp. di funzionamento Working temperature Betriebstemperatur	-30 °C / +125 °C



2P + 1 ≙ 3P + 1 ≙

Codici ordine/Codification/Bestellschlüssel

2P + 1 ≙ CR02

3P + 1 ≙ CR03

Codici ordine/Codification/Bestellschlüssel

2P + 1 ≙ CRB02G

3P + 1 ≙ CRB03G

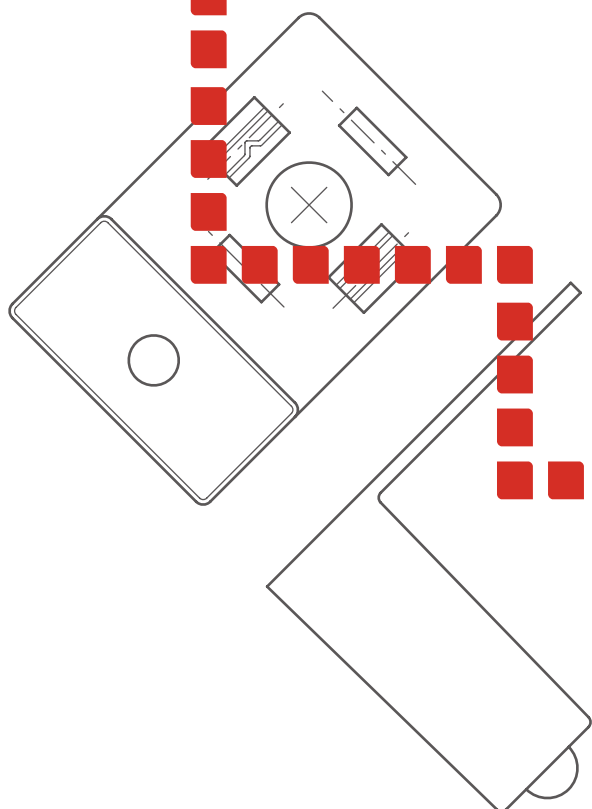


catalogo ■ catalogue ■ katalog

Filtri antidisturbo

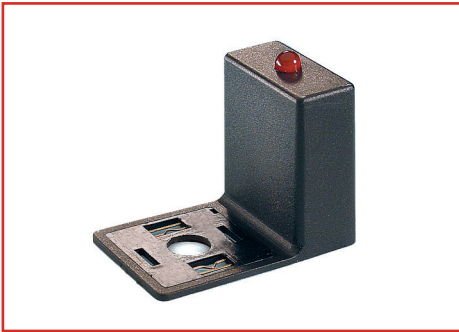
Surge suppressors

Entstörglieder



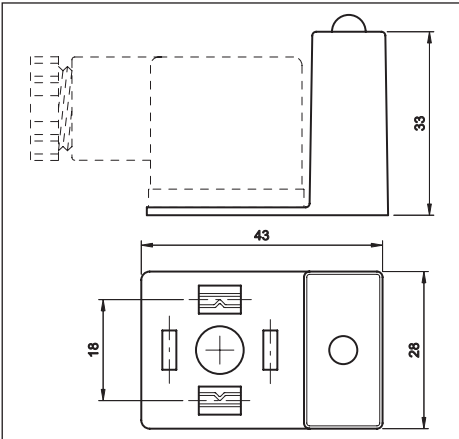
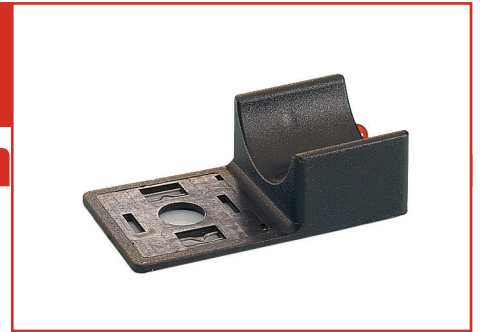
[www.omalitalia.it](http://www.omalitalia.it)

### ANTIDISTURBO



**A**

**RA**



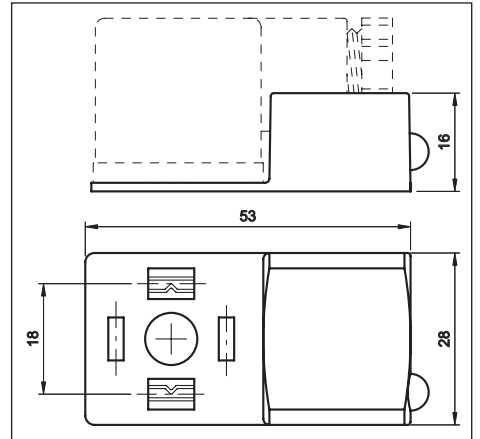
Corpo connettore  
Connector  
Stecker **PA 66 + 30% FV**

Interasse  
Spacing:  
Abstand: **18 mm**

Temp. di funzionamento  
Working temperature  
Betriebstemperatur **-25 °C / +90 °C**

Circuiti **vedi pag. 46**  
Circuitry **see page**  
Beschaltung **sieh Seite**

Colore LED **vedi pag. 46**  
LED colour **see page**  
LED Farbe **sieh Seite**

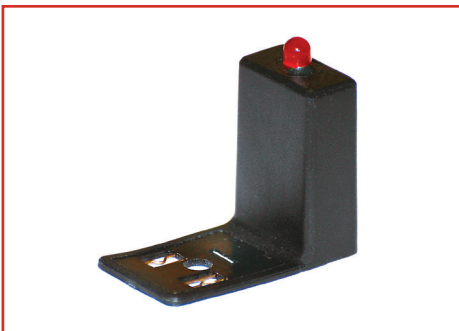


Codici ordine/Codification/Bestellschlüssel

E A

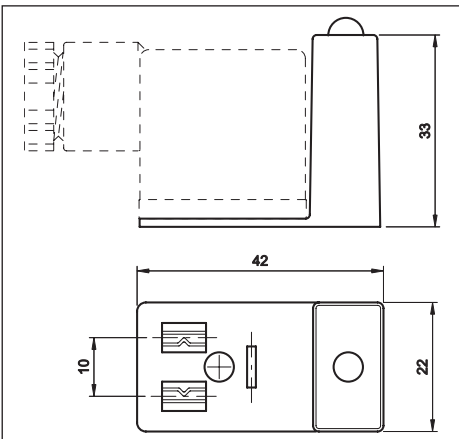
Codici ordine/Codification/Bestellschlüssel

E R A



**B H12**

**B H6**



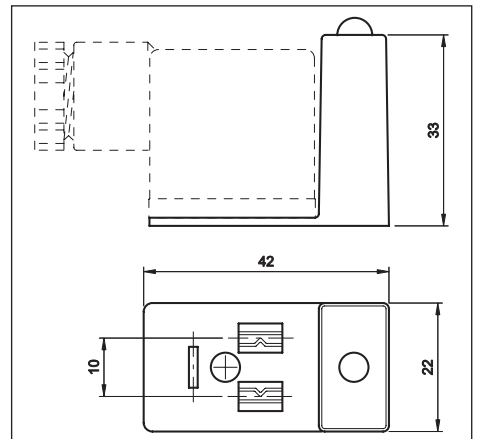
Corpo connettore  
Connector  
Stecker **PA 66 + 30% FV**

Interasse  
Spacing:  
Abstand: **10 mm**

Temp. di funzionamento  
Working temperature  
Betriebstemperatur **-25 °C / +90 °C**

Circuiti **vedi pag. 46**  
Circuitry **see page**  
Beschaltung **sieh Seite**

Colore LED **vedi pag. 46**  
LED colour **see page**  
LED Farbe **sieh Seite**



Codici ordine/Codification/Bestellschlüssel

E B 5 0

Codici ordine/Codification/Bestellschlüssel

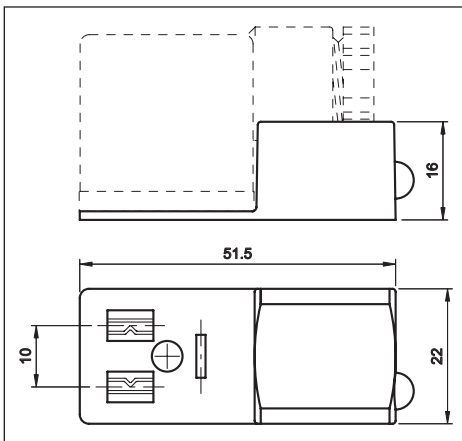
E B 5 6



**RB H12**



**RB H6**



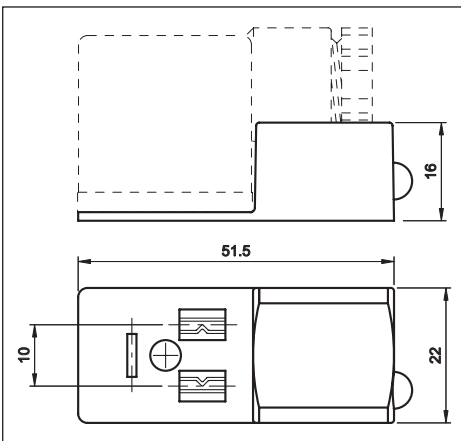
Corpo connettore  
Connector  
Stecker **PA 66 + 30% FV**

Interasse  
Spacing:  
Abstand: **10 mm**

Temp. di funzionamento  
Working temperature  
Betriebstemperatur **-25 °C / +90 °C**

Circuiti  
Circuitry  
Beschaltung vedi pag. **46**  
see page  
sieh Seite

Colore LED  
LED colour  
LED Farbe vedi pag. **46**  
see page  
sieh Seite



Codici ordine/Codification/Bestellschlüssel

E R B 5 [ ] [ ] 0

Codici ordine/Codification/Bestellschlüssel

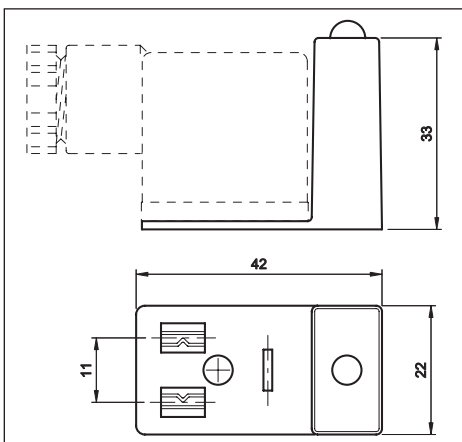
E R B 5 [ ] [ ] 6



**INDUSTRIAL  
STANDARD  
H12**



**INDUSTRIAL  
STANDARD  
H6**



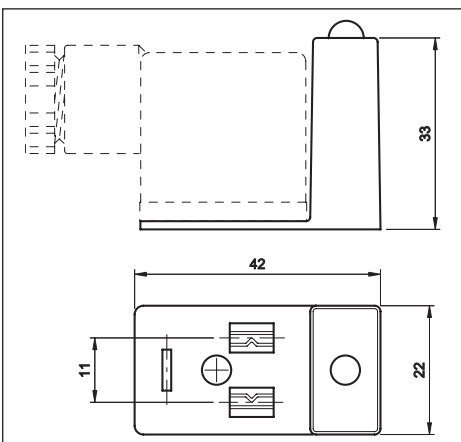
Corpo connettore  
Connector  
Stecker **PA 66 + 30% FV**

Interasse  
Spacing:  
Abstand: **11 mm**

Temp. di funzionamento  
Working temperature  
Betriebstemperatur **-25 °C / +90 °C**

Circuiti  
Circuitry  
Beschaltung vedi pag. **46**  
see page  
sieh Seite

Colore LED  
LED colour  
LED Farbe vedi pag. **46**  
see page  
sieh Seite



Codici ordine/Codification/Bestellschlüssel

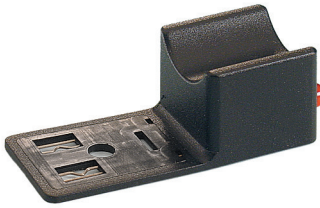
E B [ ] [ ] 0

Codici ordine/Codification/Bestellschlüssel

E B [ ] [ ] 6

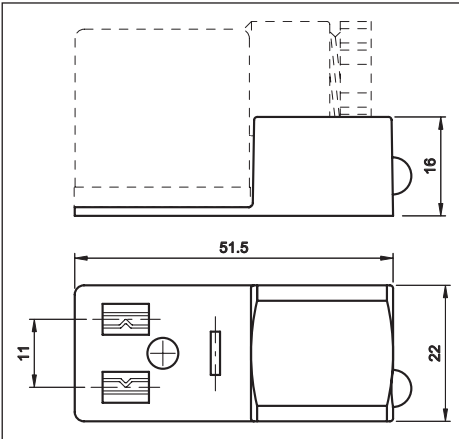


### ANTIDISTURBO



**INDUSTRIAL  
STANDARD  
H12**

**INDUSTRIAL  
STANDARD  
H6**



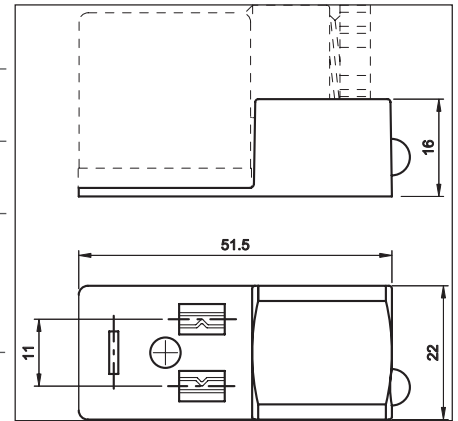
Corpo connettore  
Connector  
Stecker **PA 66 + 30% FV**

Interasse  
Spacing:  
Abstand: **11 mm**

Temp. di funzionamento  
Working temperature  
Betriebstemperatur **-25 °C / +90 °C**

Circuiti vedi pag.  
Circuitry see page **46**  
Beschaltung sieh Seite

Colore LED vedi pag.  
LED colour see page **46**  
LED Farbe sieh Seite



Codici ordine/Codification/Bestellschlüssel

E R B   O

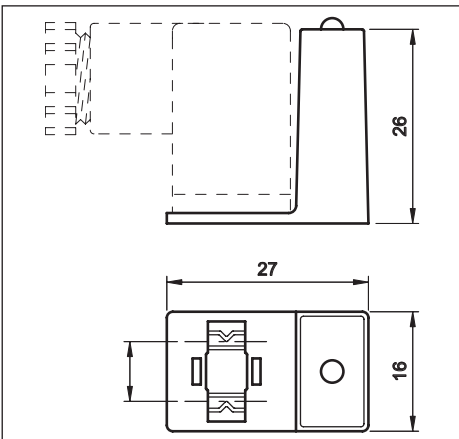
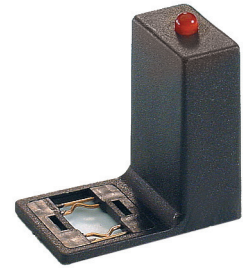
Codici ordine/Codification/Bestellschlüssel

E R B   6



**C**

**C  
INDUSTRIAL  
STANDARD**



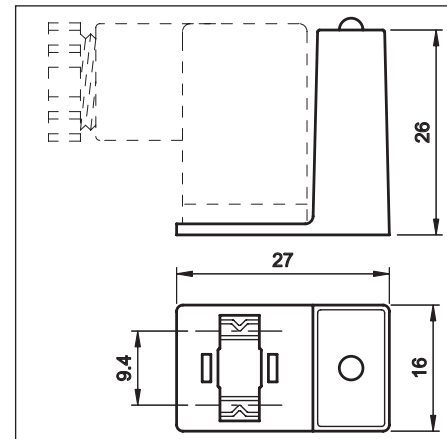
Corpo connettore  
Connector  
Stecker **PA 66 + 30% FV**

8 mm Interasse  
Spacing:  
Abstand: **9,4 mm**

Temp. di funzionamento  
Working temperature  
Betriebstemperatur **-25 °C / +90 °C**

Circuiti vedi pag.  
Circuitry see page **46**  
Beschaltung sieh Seite

Colore LED vedi pag.  
LED colour see page **46**  
LED Farbe sieh Seite



Codici ordine/Codification/Bestellschlüssel

E C 6

Codici ordine/Codification/Bestellschlüssel

E C



OMF44

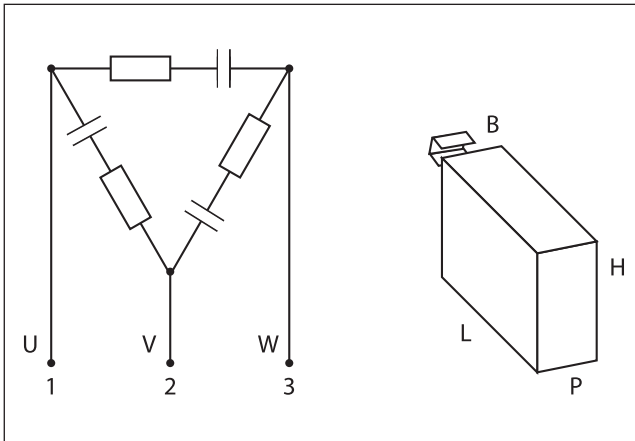


OMF410

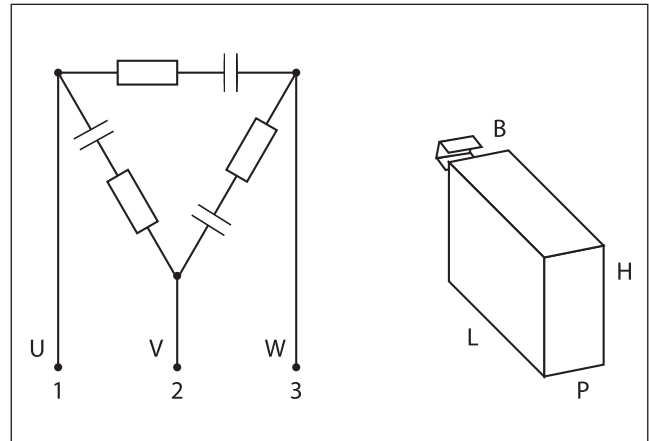
Custodia in plastica sigillata con resina epossidica V0. terminazioni a forchetta da 4 mm, lunghezza terminali 200 mm. Forniti con accessori di montaggio su guida DIN (EN) e fissaggio a vite.

Plastic case, components sealed with V0 epoxy resin. 200 mm leads with forked spade terminals. Complete with mounting accessories.

Gehäuse aus Kunststoff, Komponenten im V0 - Epoxyharz. 200 mm Leiter mit 4 mm Gabeln. Geliefert mit Halterung.



Tensione Voltage Spannung	3 x 400 V ca
Frequenza Frequency Frequenz	50 / 60 Hz
Potenza Power Leistung	4 Kw
Valore componenti Components rating Werte	0,22 µF + 220 Ω
Sezione conduttori Wire section Leiterquerschnitt	0,75 mm <sup>2</sup>
Grado di protezione Protection class Schutzart	IP 67
Temp. di funzionamento Working temperature Betriebstemperatur	-10 °C / +50 °C
Dimensioni mm Dimensions mm Abmessungen mm	H 42 - L 54 - P 25 - B 13



Tensione Voltage Spannung	3 x 400 V ca
Frequenza Frequency Frequenz	50 / 60 Hz
Potenza Power Leistung	10 Kw
Valore componenti Components rating Werte	0,47 µF + 220 Ω
Sezione conduttori Wire section Leiterquerschnitt	0,75 mm <sup>2</sup>
Grado di protezione Protection class Schutzart	IP 67
Temp. di funzionamento Working temperature Betriebstemperatur	-10 °C / +50 °C
Dimensioni mm Dimensions mm Abmessungen mm	H 48 - L 49 - P 28 - B 13

Codici ordine/Codification/Bestellschlüssel

OMF44

Codici ordine/Codification/Bestellschlüssel

OMF410



	Descrizione/Description/Beschreibung	Tensione/Voltage/Spannung	CODICE/ CODE/ KODE	Tipo/Type/Bez.
	LED bipolare, colore: rosso, giallo, verde Bipolar LED, color: red, yellow, green Zweipolige LED - Anzeige, farbe: rot, gelbe, grüne	10/50 V	<b>B</b>	EA - ERA EB - ERB EC
		70/250 V	<b>C</b>	
	LED bipolare + Varistore di protezione contro le sovratensioni Bipolar LED + Varistor protection against overvoltage Zweipolige LED - Anzeige + Varistorschutz gegen Überspannung	24 V	<b>G</b>	EA - ERA EB - ERB EC
		48 V	<b>H</b>	
		110 V	<b>J</b>	
		250 V	<b>K</b>	
	LED bipolare, colore: rosso, giallo, verde Bipolar LED, color: red, yellow, green Zweipolige LED - Anzeige, farbe: rote, gelbe, grüne  RC = 0,22µF + 150 Ω	10/50 V	<b>U</b>	EA - ERA EB - ERB
		70/250 V	<b>X</b>	
	TRANSIL	24 V	<b>S</b>	EA - ERA EB - ERB EC
		110 V	<b>T</b>	

Colore LED LED colour LED farbe	Rosso/Red/Rot	<b>R</b>
	Verde/Green/Grün	<b>E</b>
	Giallo/Yellow/Gelb	<b>Y</b>